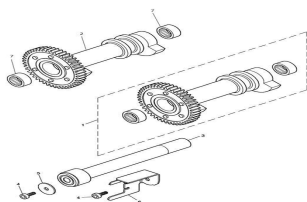
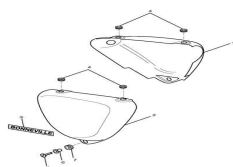


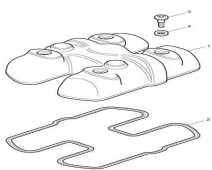
Airbox



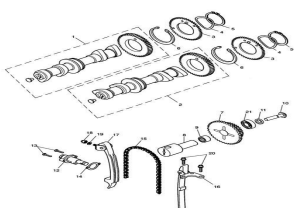
Balancer



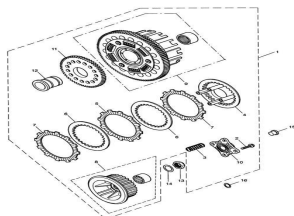
Bodywork, side panels



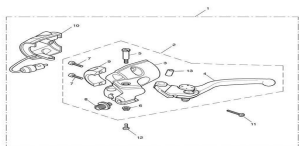
Cam cover



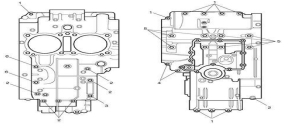
Camshaft & camshaft drive



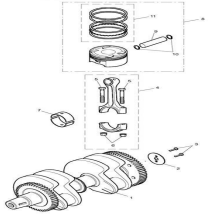
Clutch



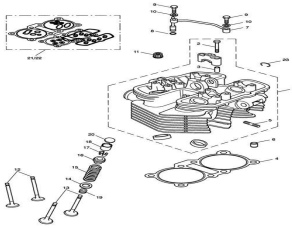
Clutch controls & switches



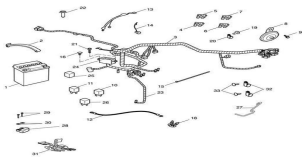
Crankcase bolts



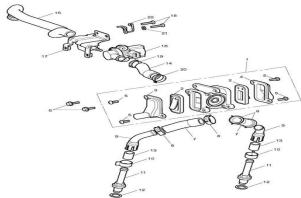
Crankshaft, connecting rods & pistons



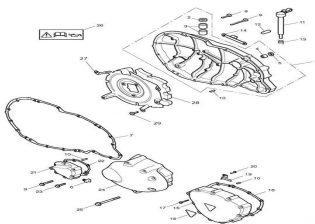
Cylinder head & valves



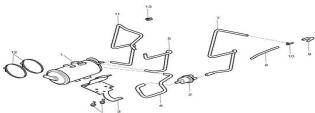
Electrical equipment



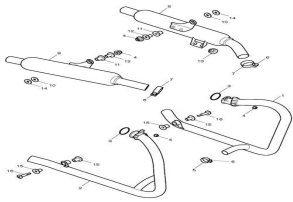
Emissions control



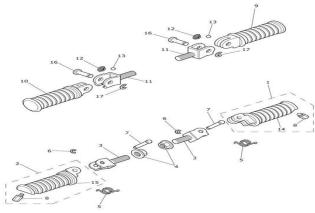
Engine covers



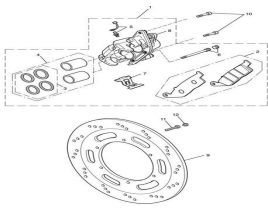
Evaporative loss control system



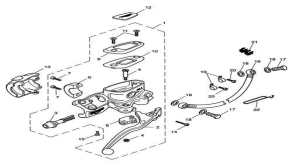
Exhaust system



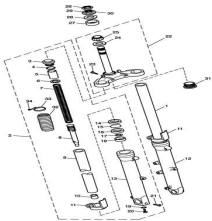
Footrests & mountings



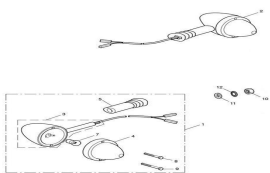
Front brake caliper & discs



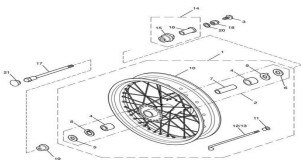
Front brake master cylinder & hoses



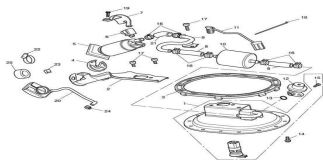
Front forks & lower yoke



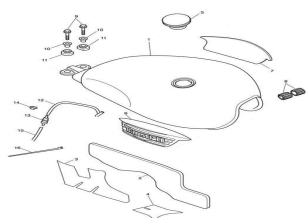
Front indicators



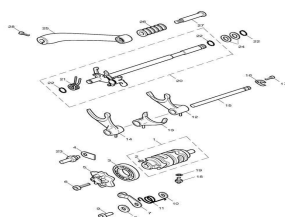
Front wheel



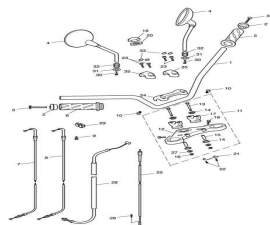
Fuel pump & fittings



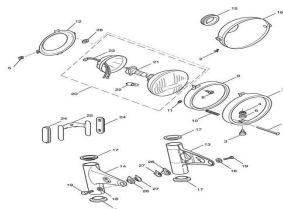
Fuel tank & fittings



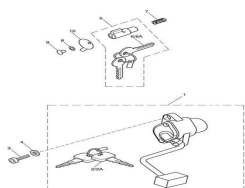
Gear selector & pedal



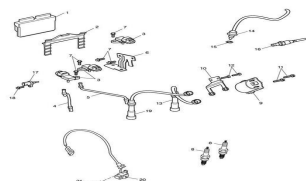
Handlebars, top yoke, cables & mirrors



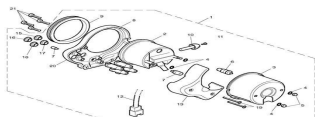
Headlight assembly



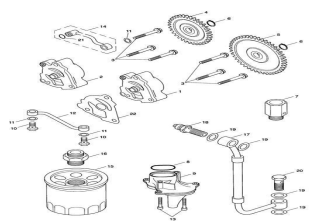
Ignition switch & steering lock



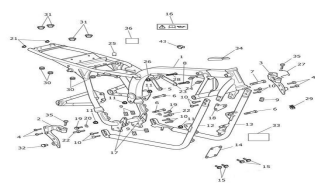
Ignition system



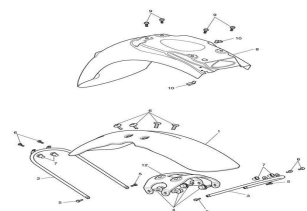
Instruments



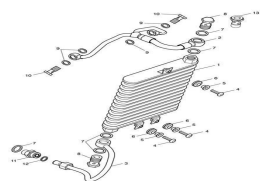
Lubrication system



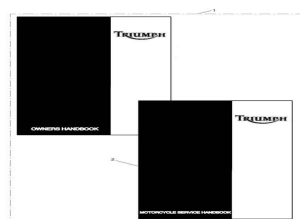
Main frame & fittings



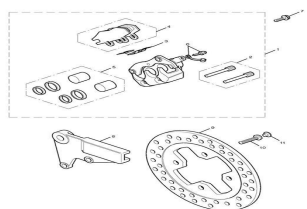
Mudguards



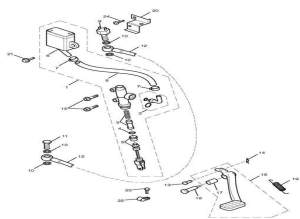
Oil cooler



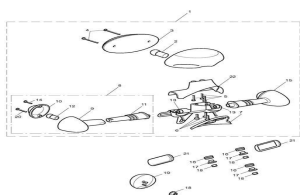
Owners handbook



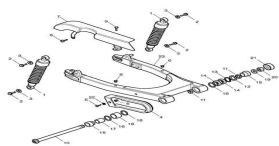
Rear brake caliper & disc



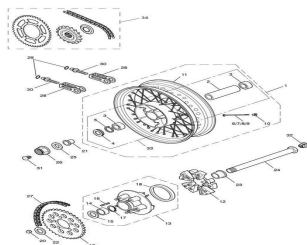
Rear brake master cylinder, reservoir & pedal



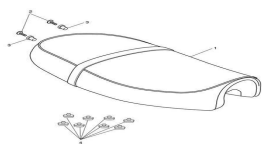
Rear light & rear indicators



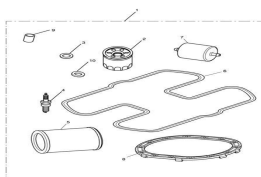
Rear suspension



Rear wheel & final drive



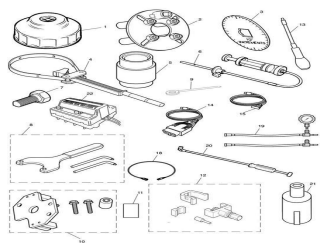
Seat



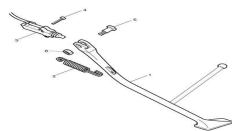
Service kits



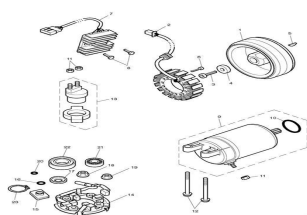
Service literature



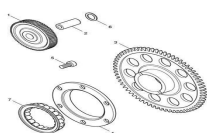
Service tools



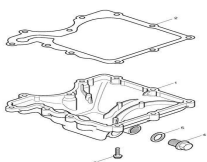
Stands



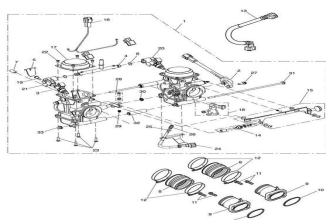
Starter & alternator



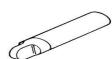
Starter drive



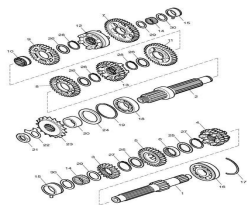
Sump & fittings



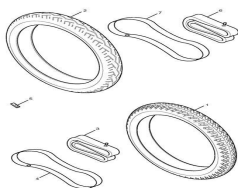
Throttle bodies



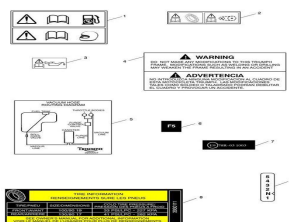
Touch-up paint



Transmission



Tyres, valves & balance weights



Warning labels