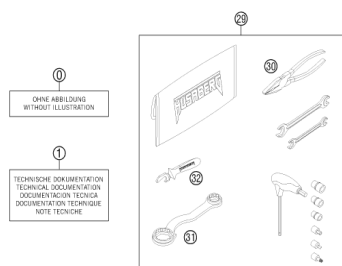


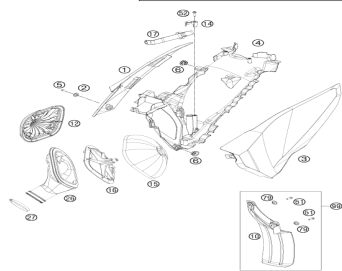
СПИСОК УЗЛОВ ДЛЯ HUSQVARNA TE 300

//OEM.MOTO-ALL.RU/

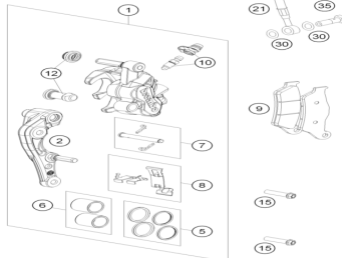
ТЕЛ.: +7 (495) 177-12-75



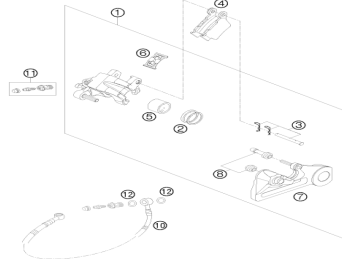
Accessories kit



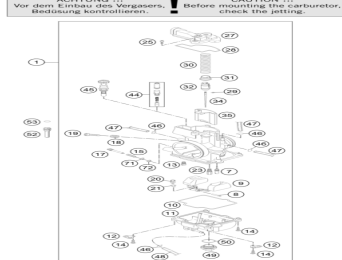
Air filter



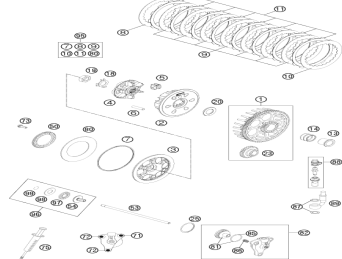
Brake caliper front



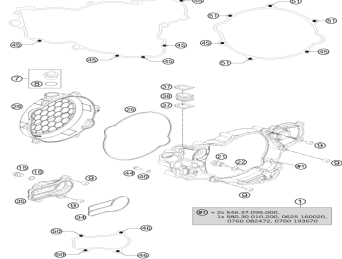
Brake caliper rear



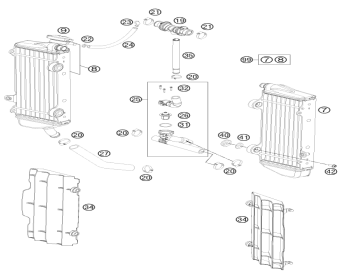
Carburetor



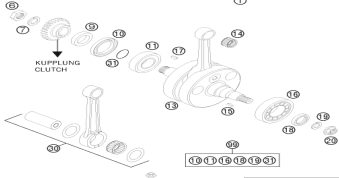
Clutch



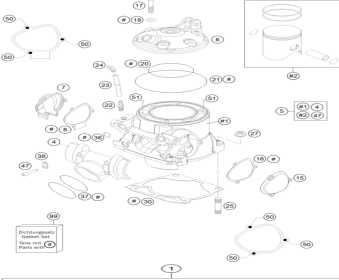
Clutch cover



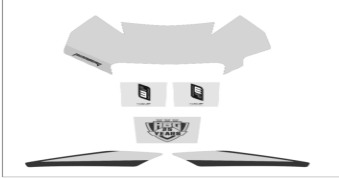
Cooling system



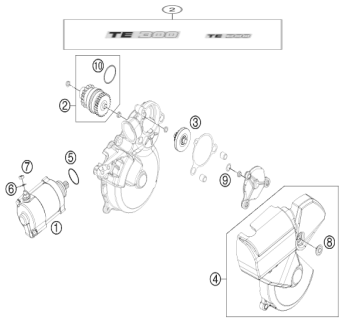
Crankshaft, piston



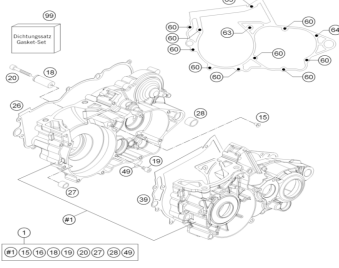
Cylinder, cylinder head



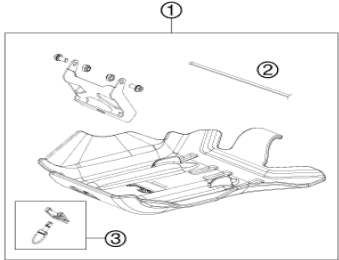
Decal



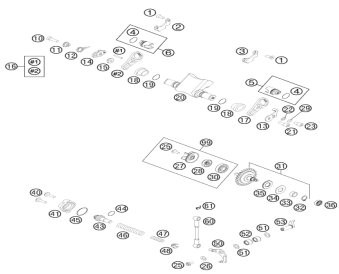
Electric starter



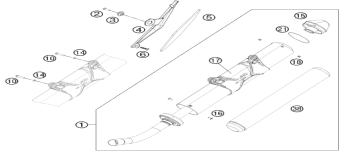
Engine case



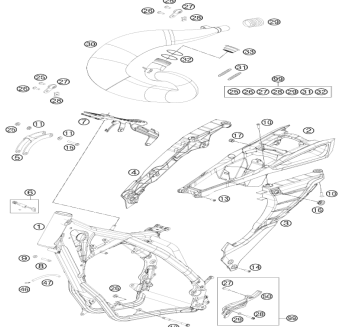
Engine guard



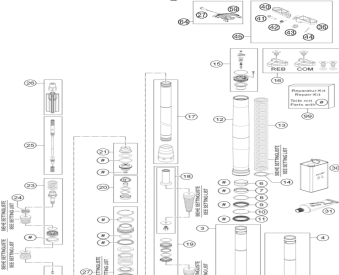
Exhaust control



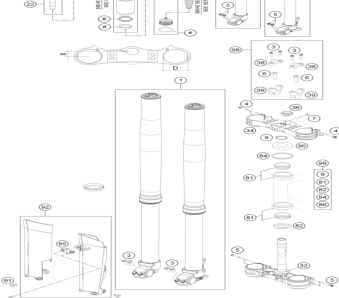
Выхлопная система



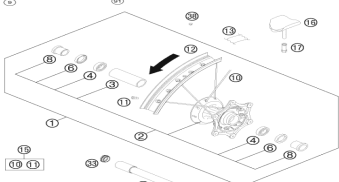
Frame



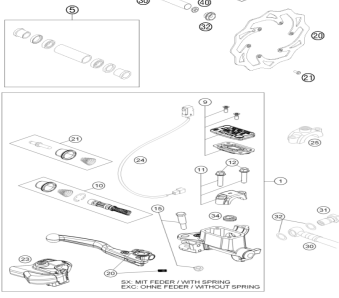
Front fork disassembled



Front fork, triple clamp

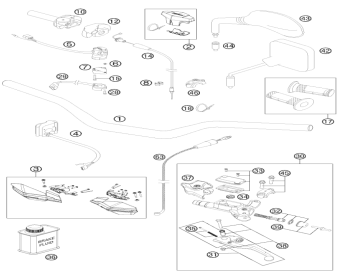


Front wheel

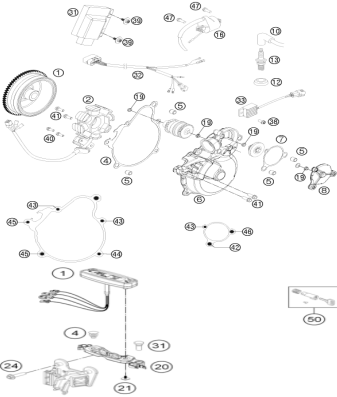


Hand brake cylinder





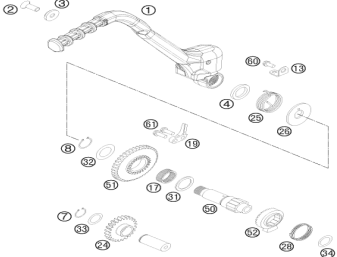
Handlebar, controls



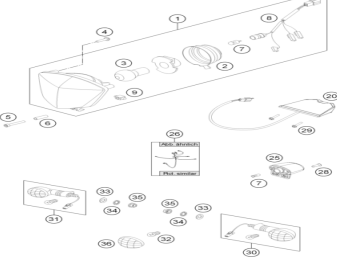
Ignition system



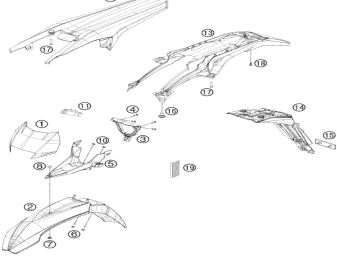
Instruments / lock system



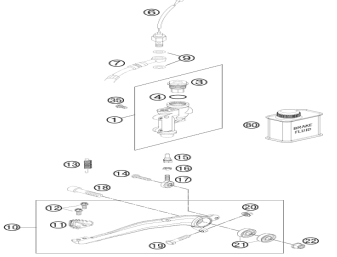
Kick starter



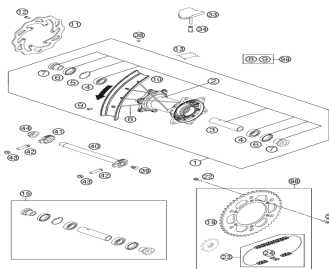
Lighting system



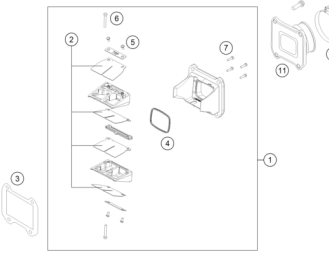
Mask, fenders



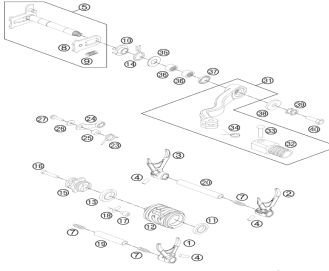
Rear brake control



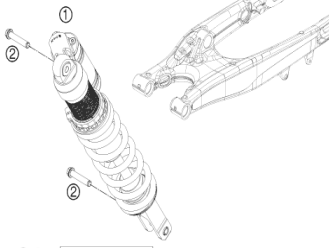
Rear wheel



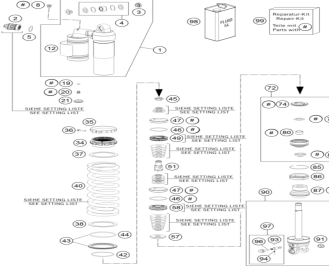
Reed valve case



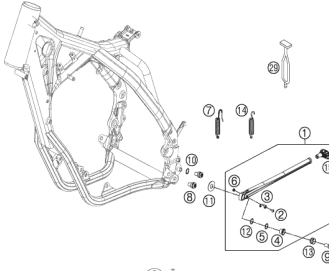
Shifting mechanism



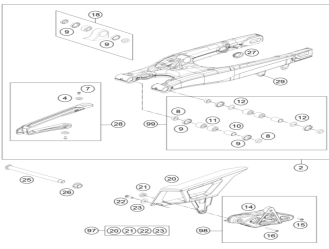
Shock absorber



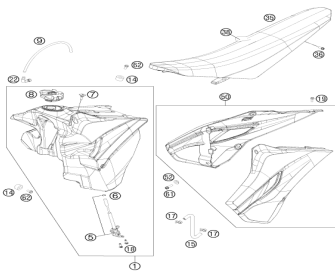
Shock absorber disassembled



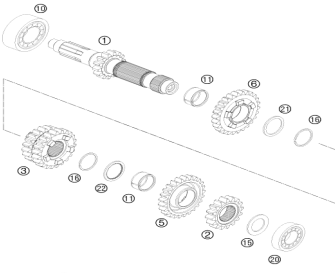
Side / center stand



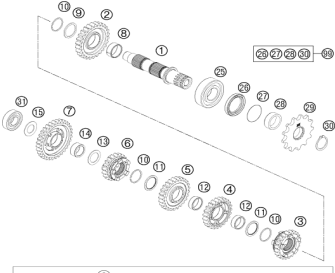
Swing arm



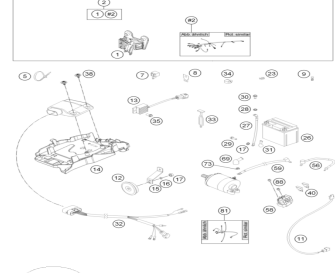
Tank, seat, cover



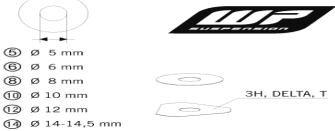
Transmission i - main shaft



Transmission ii - countershaft



Wiring harness



- ⑤ Ø 5 mm
- ⑥ Ø 6 mm
- ⑧ Ø 8 mm
- ⑩ Ø 10 mm
- ⑫ Ø 12 mm
- ⑬ Ø 14-14,5 mm
- ⑮ Ø 16 mm
- ⑰ Ø 20 mm
- ⑱ Ø 21 mm
- ⑳ Ø 22 mm
- ㉑ Ø 23 mm
- ㉒ Ø 24,5 mm
- ㉓ Ø 28,5 mm
- ㉔ Ø 32 mm
- ㉕ Ø 52 mm

Wp shims for setting