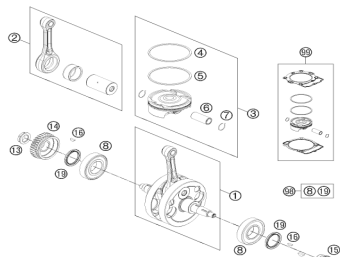
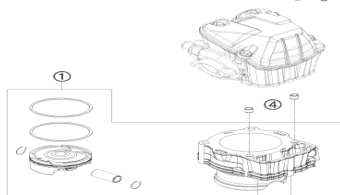


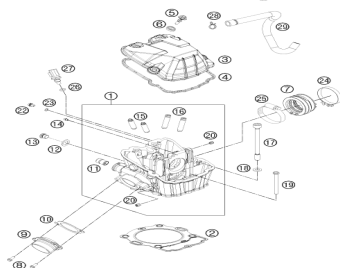
Cooling system



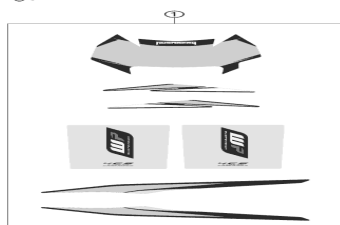
Crankshaft, piston



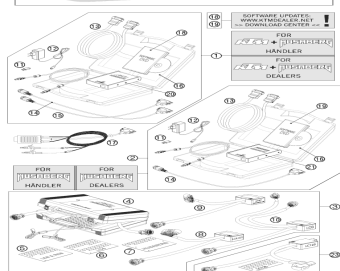
Cylinder



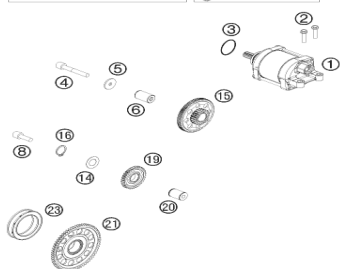
Cylinder head



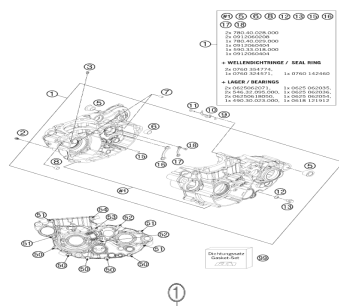
Decal



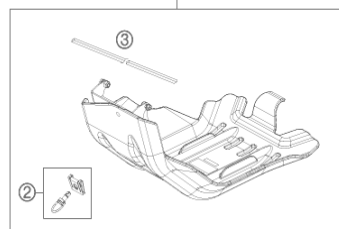
Diagnostic tool



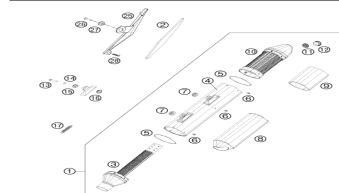
Electric starter



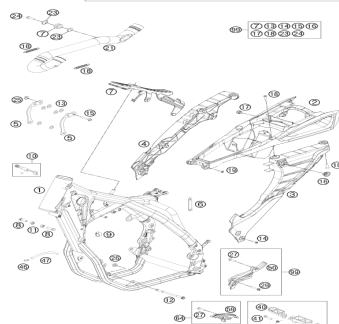
Engine case



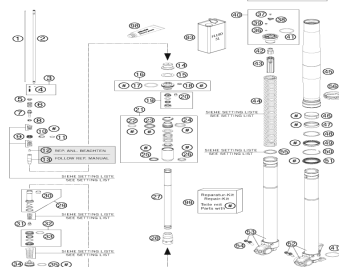
Engine guard



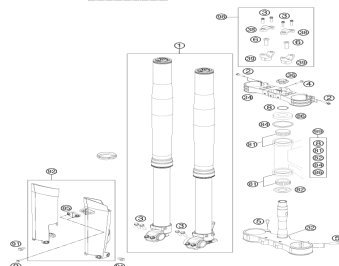
Выхлопная система



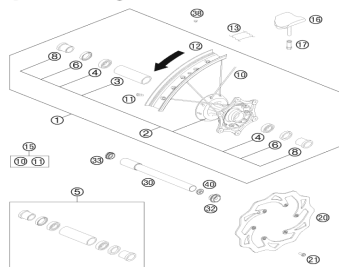
Frame



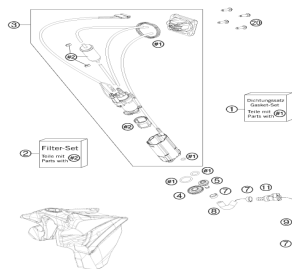
Front fork disassembled



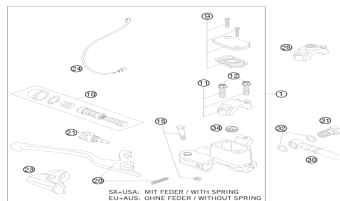
Front fork, triple clamp



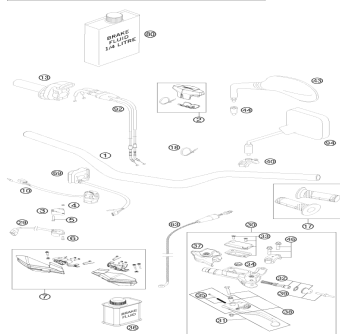
Front wheel



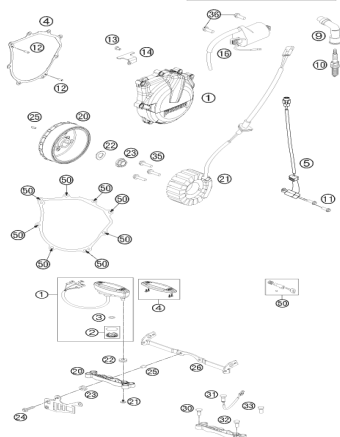
Fuel pump



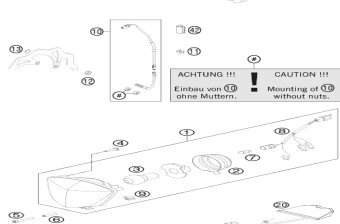
Hand brake cylinder



Handlebar, controls



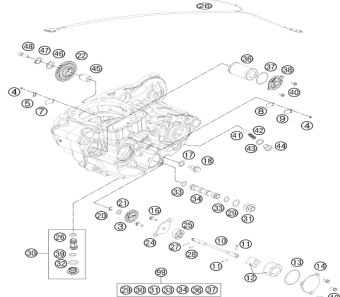
Ignition system



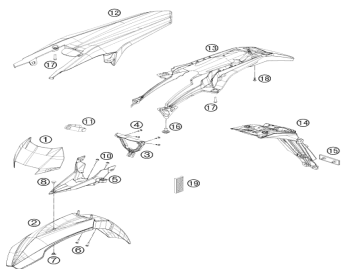
Instruments / lock system



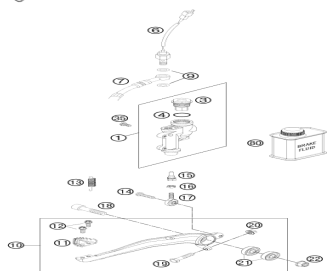
Lighting system



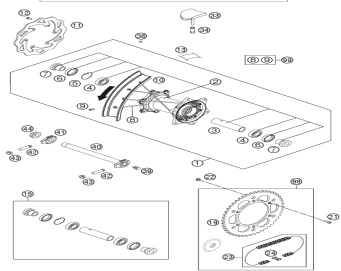
Lubricating system



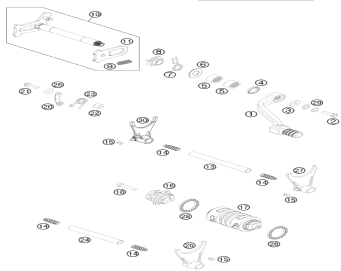
Mask, fenders



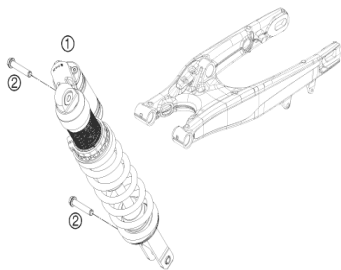
Rear brake control



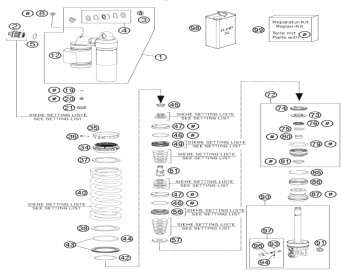
Rear wheel



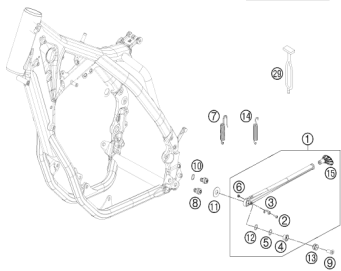
Shifting mechanism



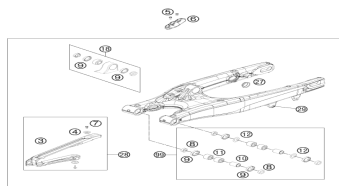
Shock absorber



Shock absorber disassembled



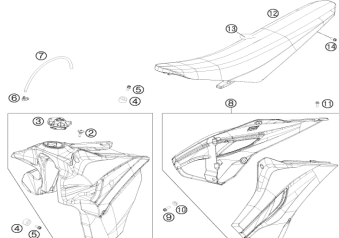
Side / center stand



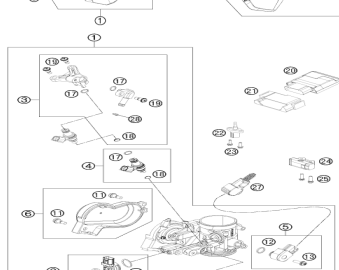
Swing arm



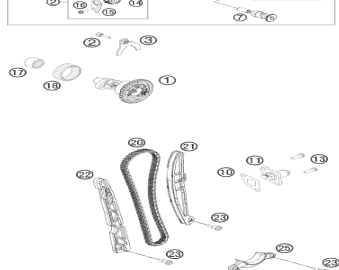
Tank, seat, cover



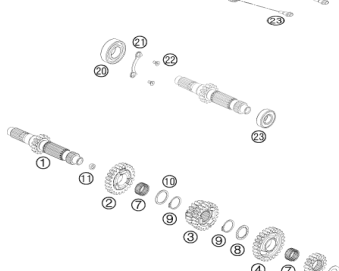
Throttle body



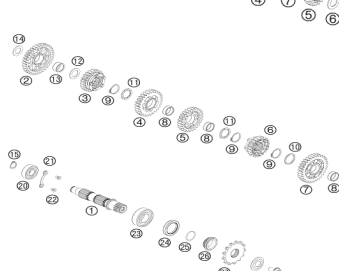
Timing drive



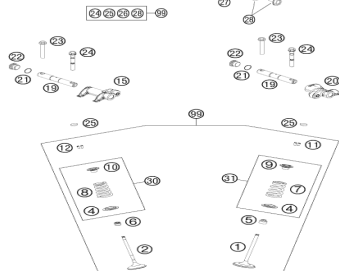
Transmission i - main shaft

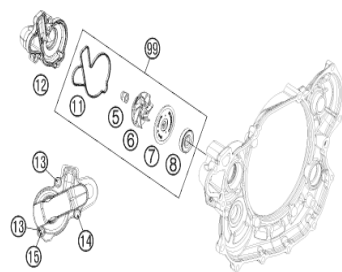


Transmission ii - countershaft

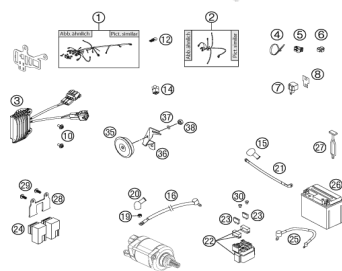


Valve drive

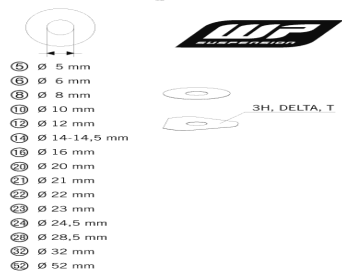




Water pump



Wiring harness



Wp shims for setting