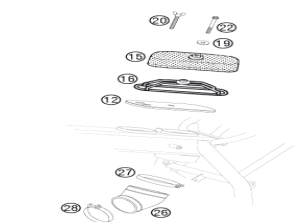
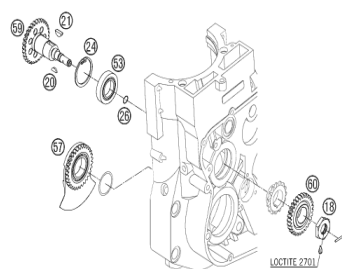


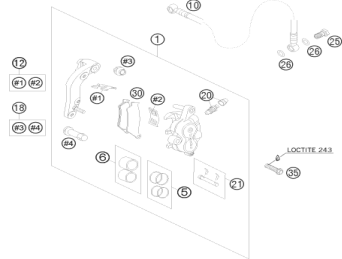
Accessories kit



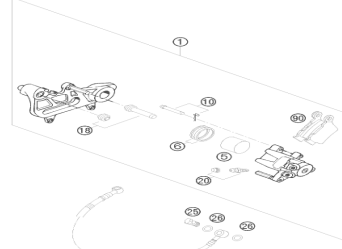
Air filter



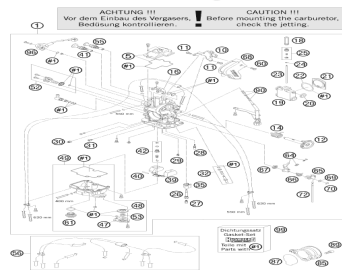
Balancer shaft



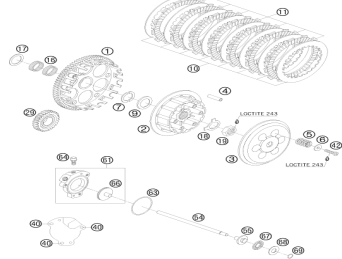
Brake caliper front



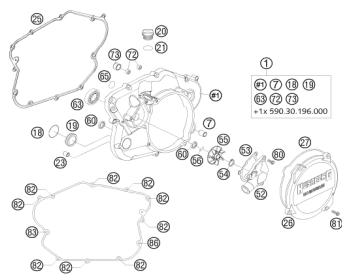
Brake caliper rear



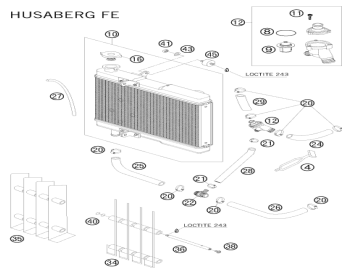
Carburetor



Clutch



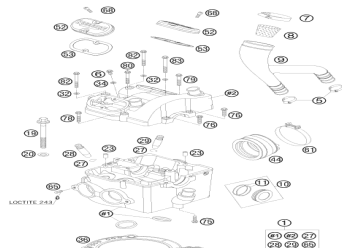
Clutch cover



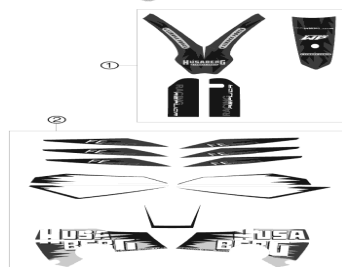
Cooling system



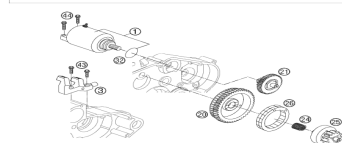
Crankshaft, piston



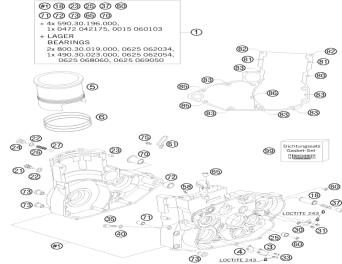
Cylinder head



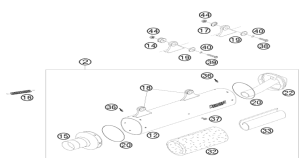
Decal



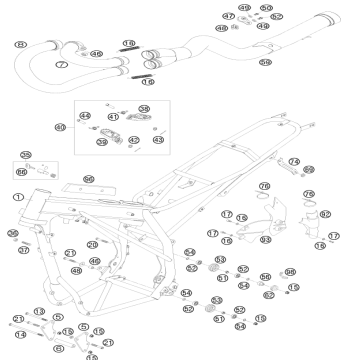
Electric starter



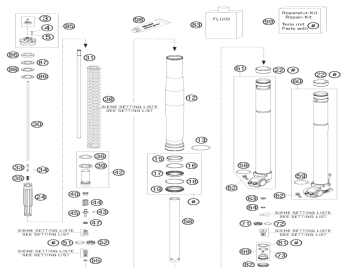
Engine case



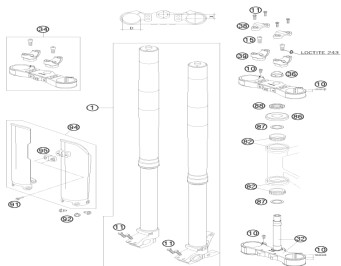
Выхлопная система



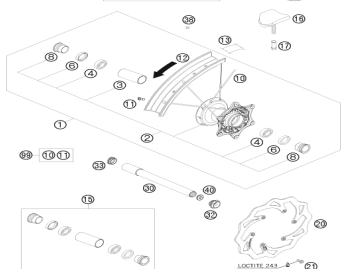
Frame



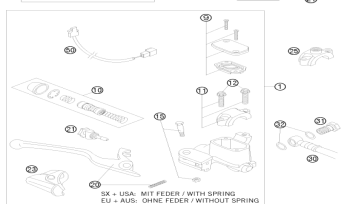
Front fork disassembled



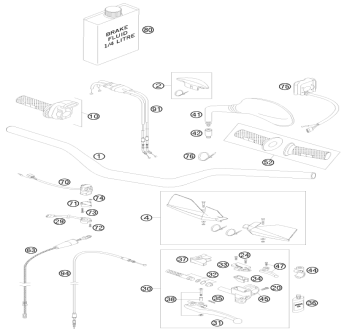
Front fork, triple clamp



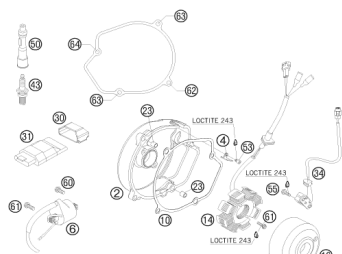
Front wheel



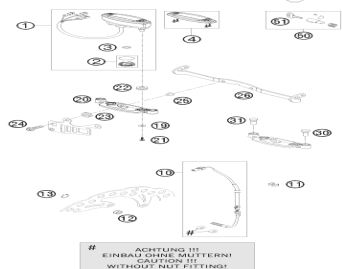
Hand brake cylinder



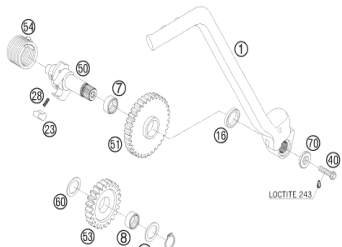
Handlebar, controls



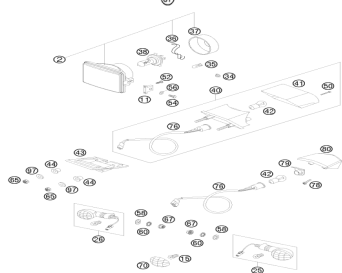
Ignition system



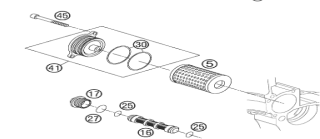
Instruments / lock system



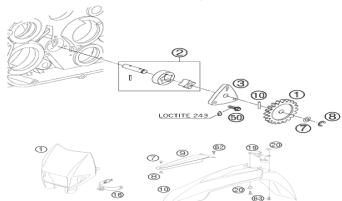
Kickstarter



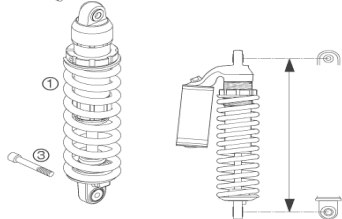
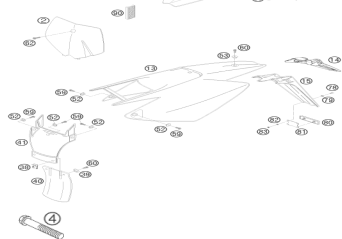
Lighting system



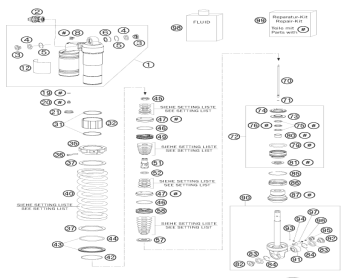
Lubricating system



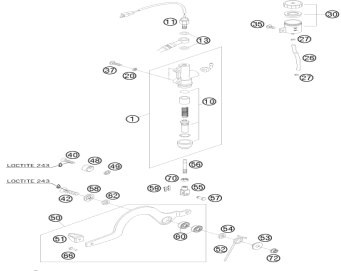
Mask, fenders



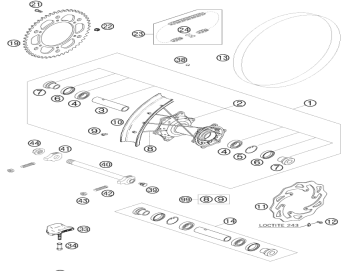
Monoshock



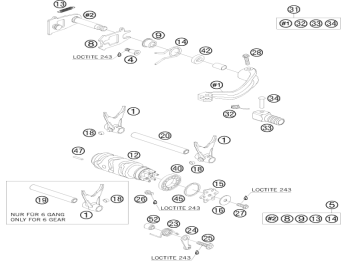
Monoshock disassembled



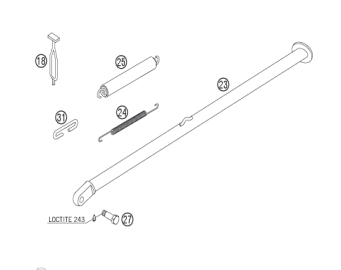
Rear brake control



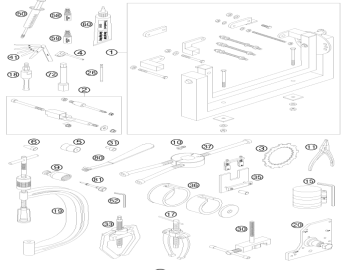
Rear wheel



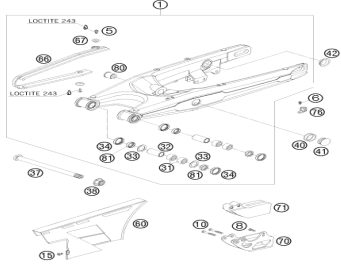
Shifting mechanism



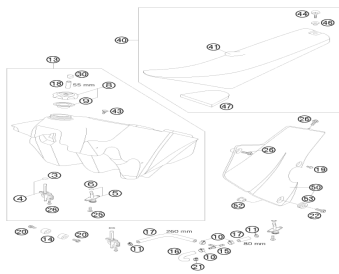
Side stand



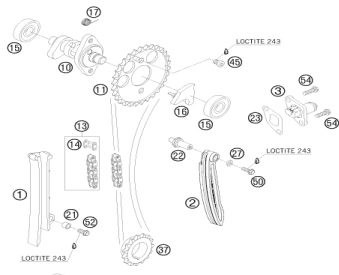
Special tools



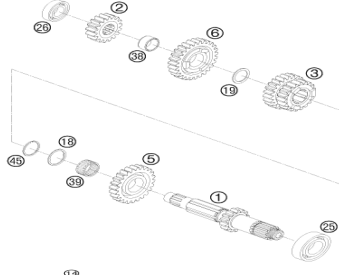
Swing arm



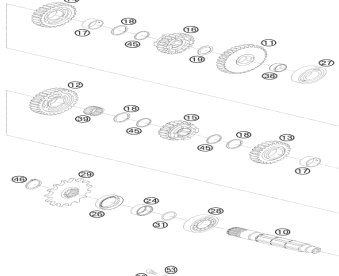
Tank, seat, cover



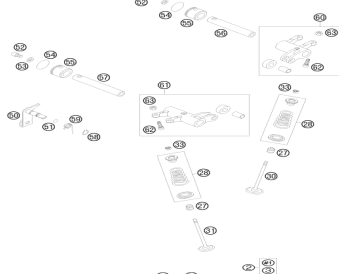
Timing drive



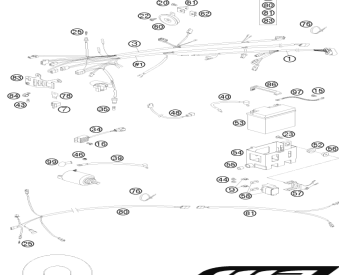
Transmission i - main shaft



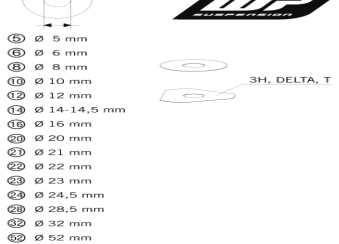
Transmission ii - countershaft



Valve drive



Wiring harness



Wp shims for setting

- 51 Ø 5 mm
- 52 Ø 6 mm
- 53 Ø 8 mm
- 54 Ø 10 mm
- 55 Ø 12 mm
- 56 Ø 14-14,5 mm
- 57 Ø 16 mm
- 58 Ø 20 mm
- 59 Ø 21 mm
- 60 Ø 22 mm
- 61 Ø 23 mm
- 62 Ø 24,5 mm
- 63 Ø 28,5 mm
- 64 Ø 32 mm
- 65 Ø 52 mm

