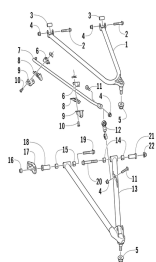


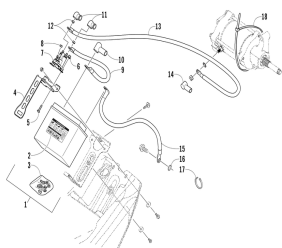
СПИСОК УЗЛОВ ДЛЯ ARCTIC CAT ZR 6000 ET-ES

//OEM.MOTO-ALL.RU/

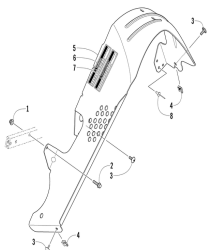
ТЕЛ.: +7 (495) 177-12-75



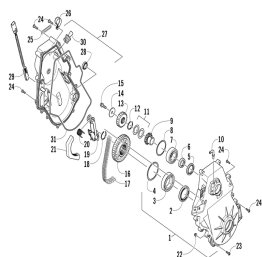
A-arm and sway bar assembly



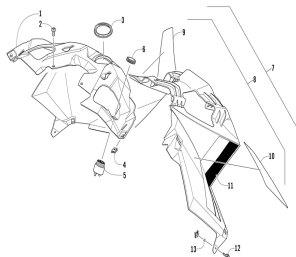
Battery assembly (eeusg_eeosg)



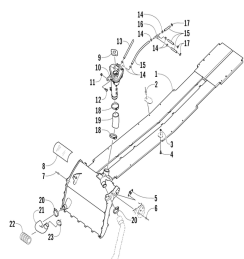
Belt guard assembly



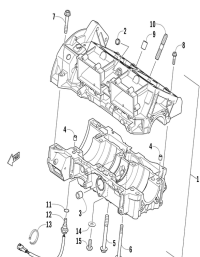
Chain case assembly



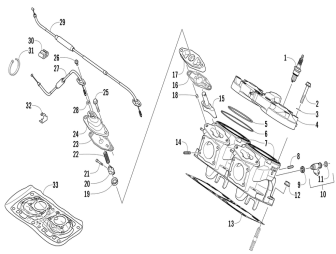
Console assembly



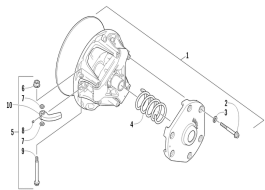
Cooling assembly



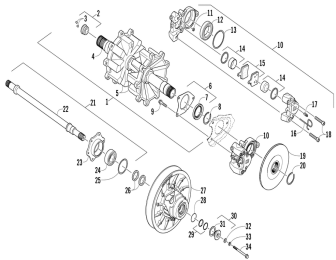
Crankcase assembly



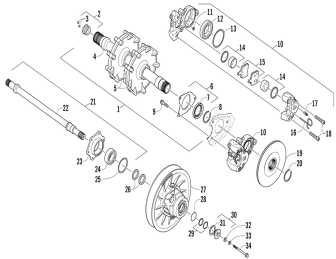
Cylinder and head assembly



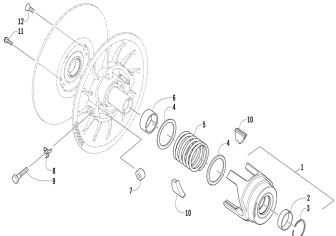
Drive clutch



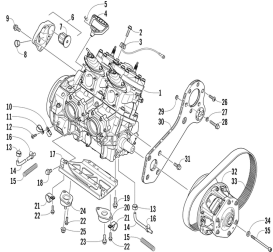
Drive train shafts and brake assemblies (eposg_eeosg)



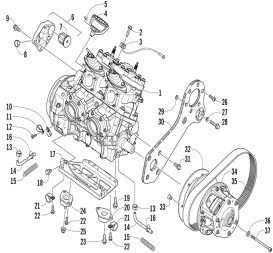
Drive train shafts and brake assemblies (epusg_eeosg)



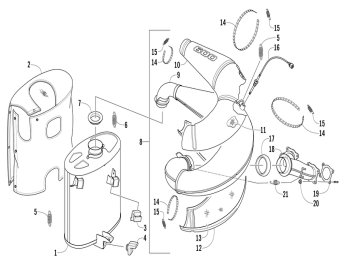
Driven clutch



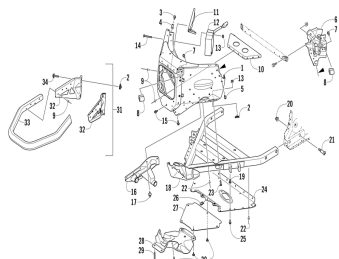
Engine and related parts (eeusg_eeosg)



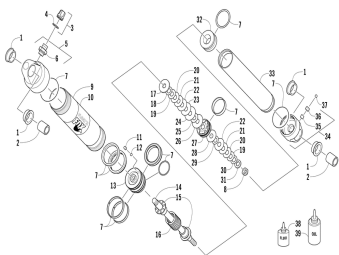
Engine and related parts (epusg_eposg)



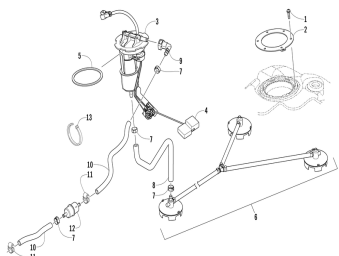
Exhaust assembly



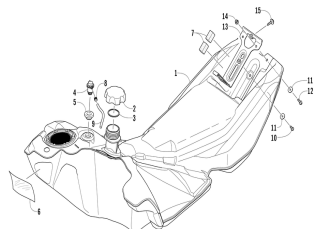
Front bumper and frame assembly



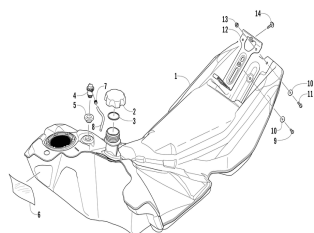
Front suspension shock absorber



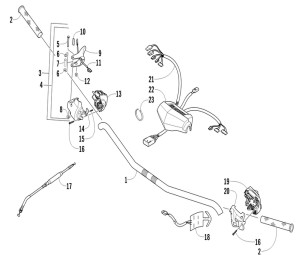
Fuel pump assembly



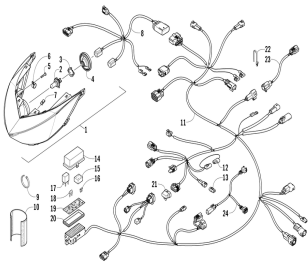
Gas tank assembly (eeusg_eeosg)



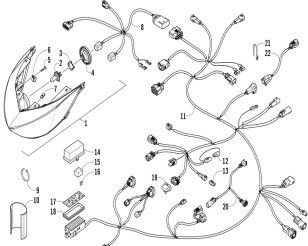
Gas tank assembly (epusg_eposg)



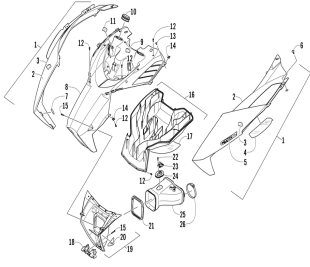
Handlebar and controls



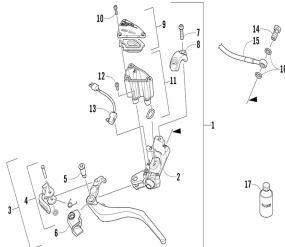
Headlight and wiring assemblies (eusg_eosg)



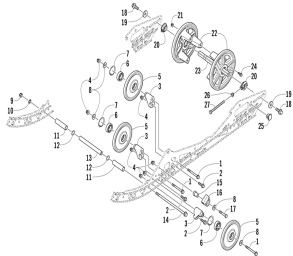
Headlight and wiring assemblies (epusg_eposg)



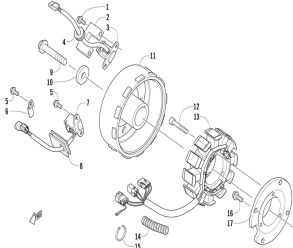
Hood and air intake assembly



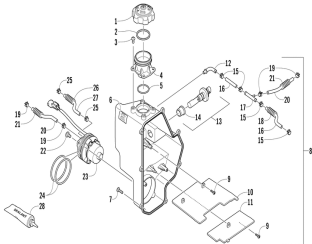
Hydraulic brake control assembly



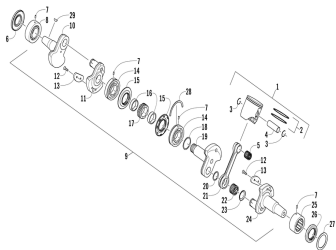
Idler wheel assembly



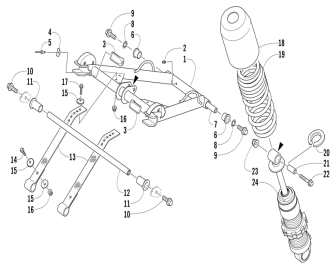
Magneto



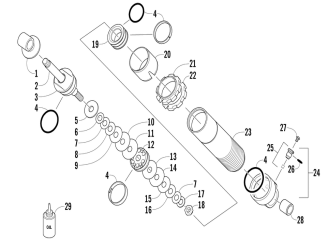
Oil tank assembly



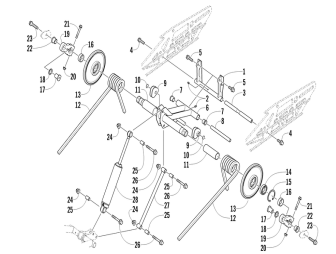
Piston and crankshaft



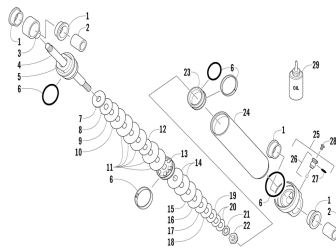
Rear suspension front arm assembly



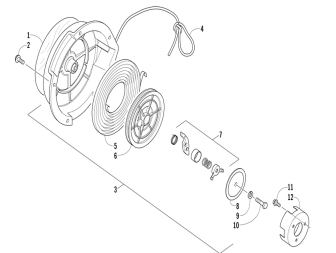
Rear suspension front arm shock absorber



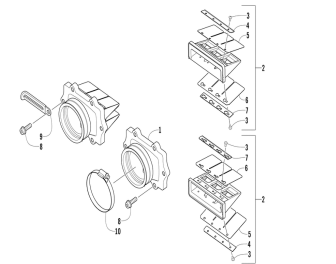
Rear suspension rear arm assembly



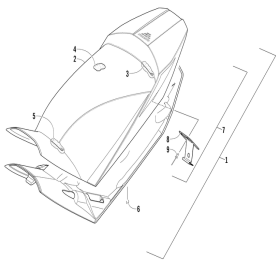
Rear suspension rear arm shock absorber



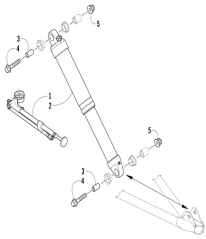
Recoil starter



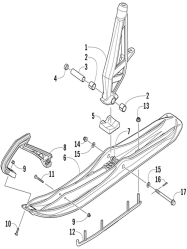
Reed valve assembly



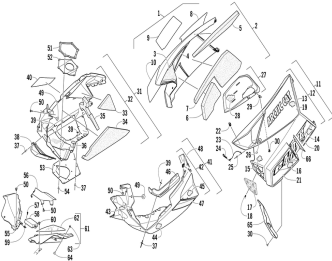
Seat assembly



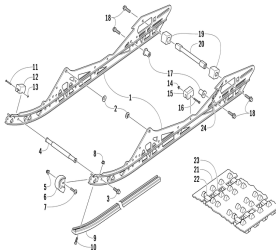
Shock absorber assembly



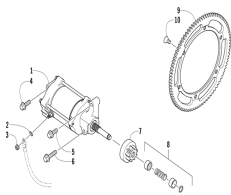
Ski and spindle assembly



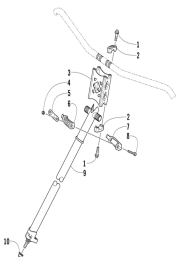
Skid plate and side panel assembly



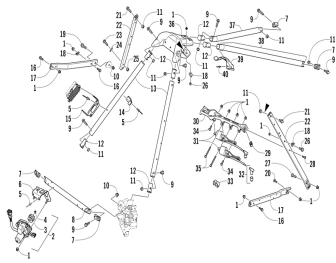
Slide rail and track assembly



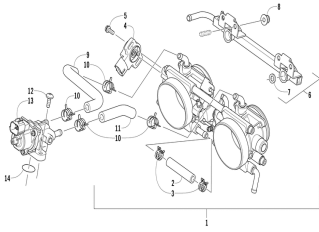
Starter motor assembly (eeusg_eeosg)



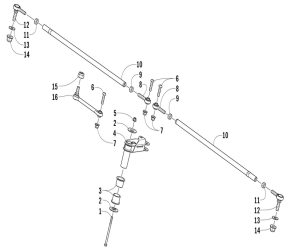
Steering post assembly



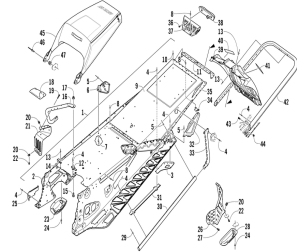
Steering support assembly



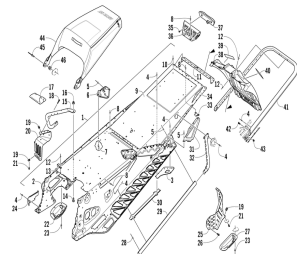
Throttle body assembly



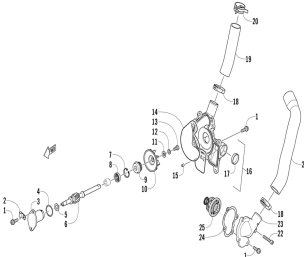
Tie rod assembly



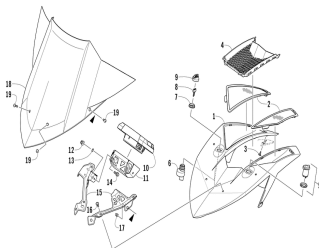
Tunnel rear bumper and snowflap assembly (eeusg_eeosg)



Tunnel rear bumper and snowflap assembly (epusg_eposg)



Water pump and thermostat



Windshield and instruments assemblies