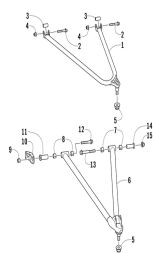


# СПИСОК УЗЛОВ ДЛЯ ARCTIC CAT M 6000 SP

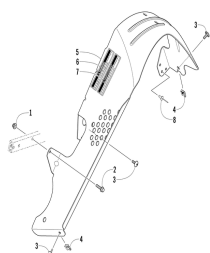
//OEM.MOTO-ALL.RU/

ТЕЛ.: +7 (495) 177-12-75

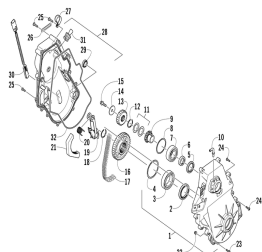
---



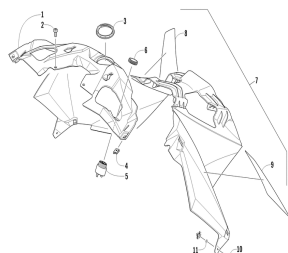
A-arm assembly



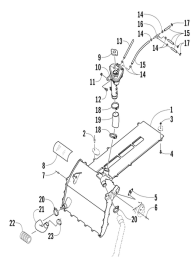
Belt guard assembly



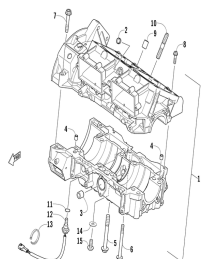
Chain case assembly



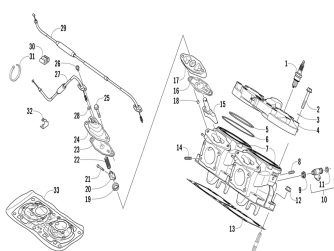
Console assembly



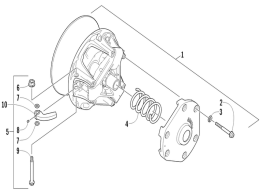
Cooling assembly



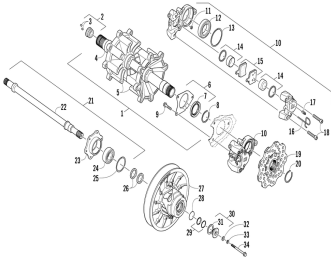
Crankcase assembly



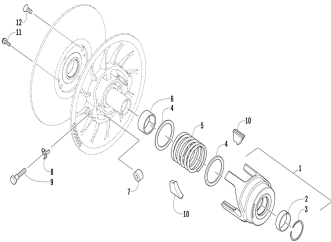
Cylinder and head assembly



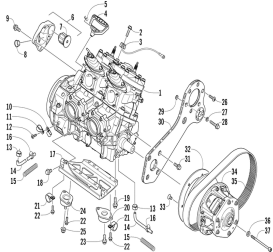
Drive clutch



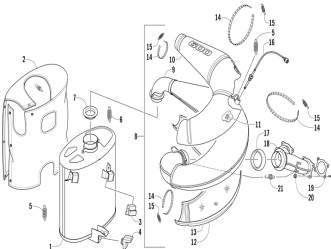
Drive train shafts and brake assemblies



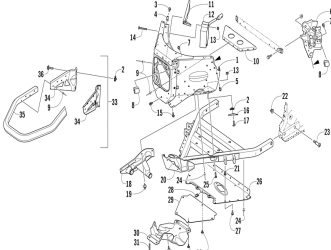
Driven clutch



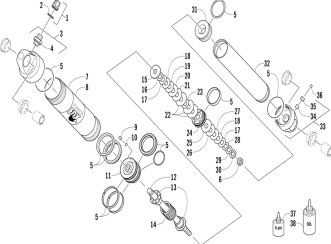
Engine and related parts



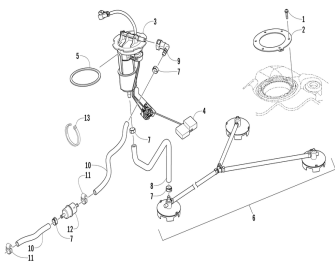
Exhaust assembly



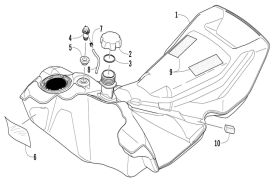
Front bumper and frame assembly



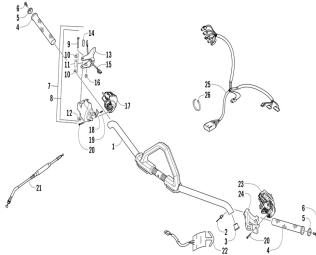
Front suspension shock absorber



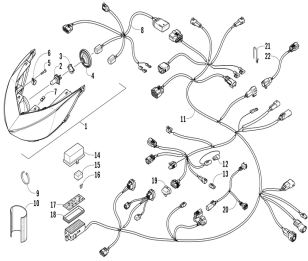
Fuel pump assembly



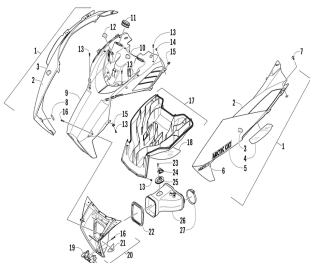
Gas tank assembly



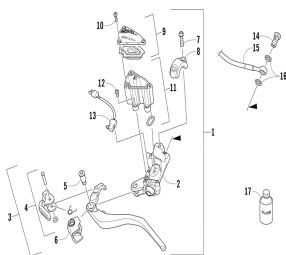
Handlebar and controls



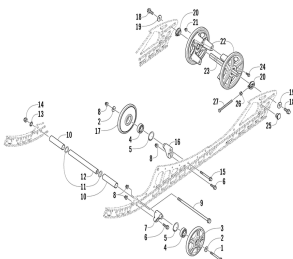
Headlight and wiring assemblies



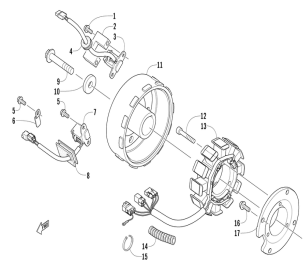
Hood and air intake assembly



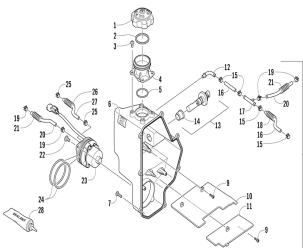
Hydraulic brake control assembly



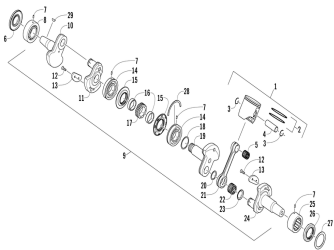
Idler wheel assembly



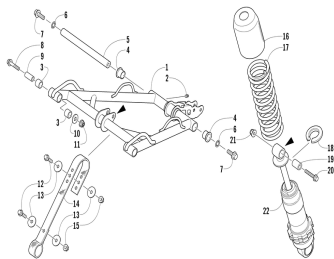
Magneto



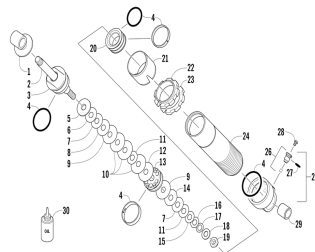
Oil tank assembly



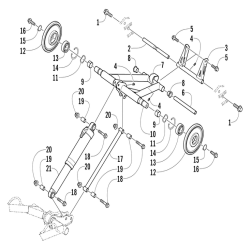
Piston and crankshaft



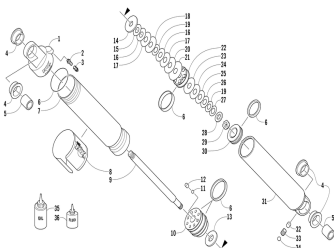
Rear suspension front arm assembly



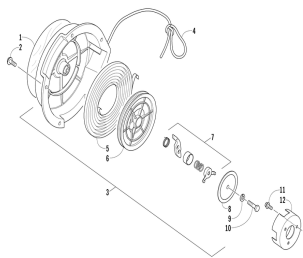
Rear suspension front arm shock absorber



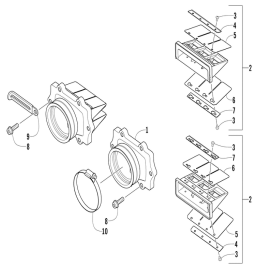
Rear suspension rear arm assembly



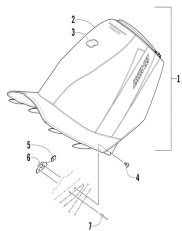
Rear suspension rear arm shock absorber



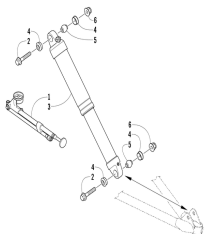
Recoil starter



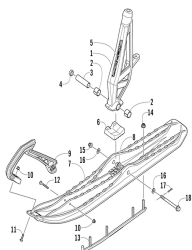
Reed valve assembly



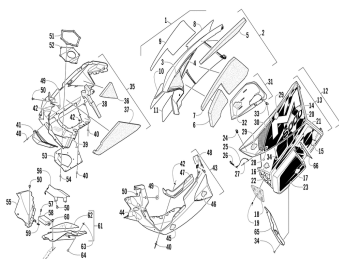
Seat assembly



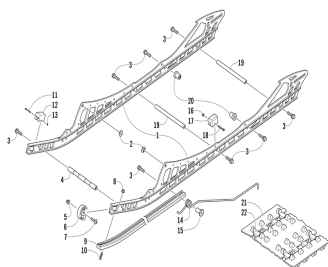
Shock absorber assembly



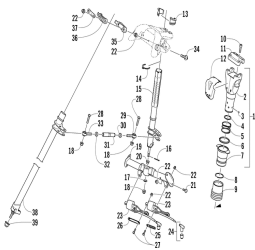
Ski and spindle assembly



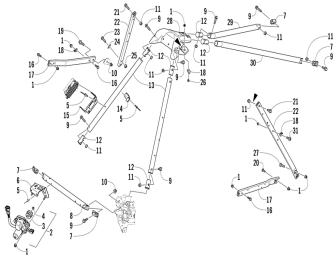
Skid plate and side panel assembly



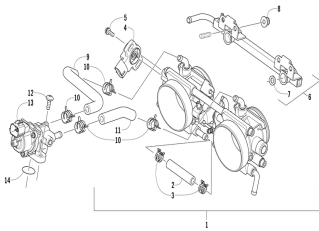
Slide rail and track assembly



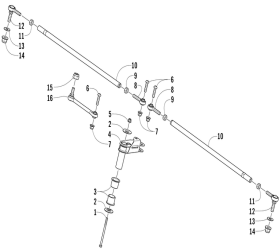
Steering post assembly



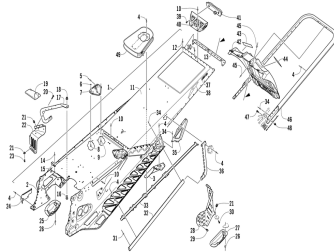
Steering support assembly



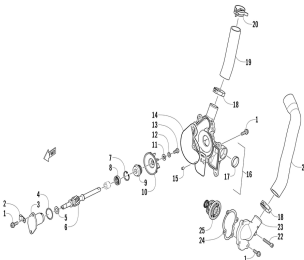
Throttle body assembly



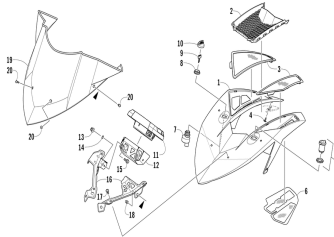
Tie rod assembly



Tunnel rear bumper and snowflap assembly



Water pump and thermostat



Windshield and instruments assemblies